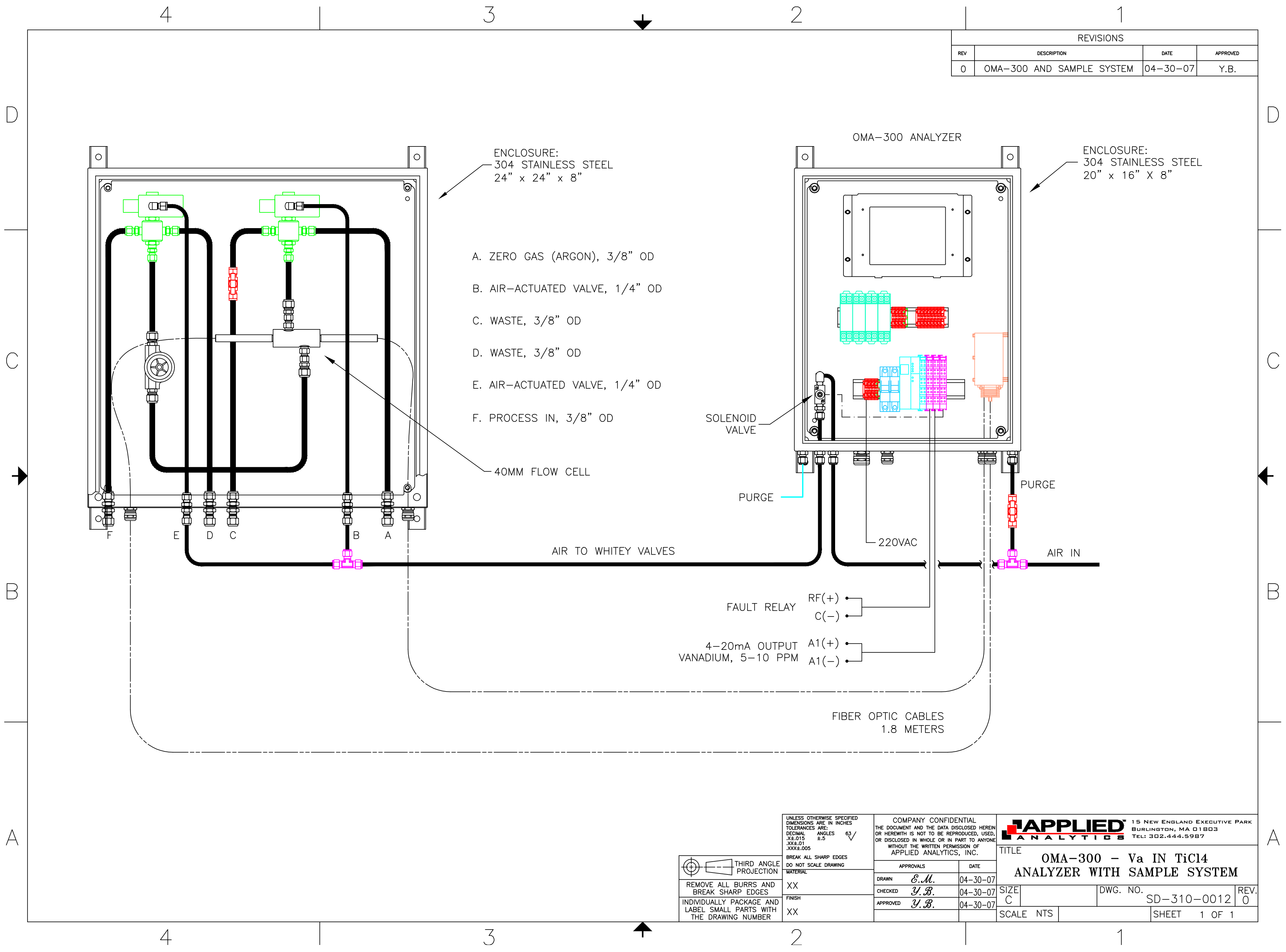


REVISIONS			
REV	DESCRIPTION	DATE	APPROVED
0	OMA-300 AND SAMPLE SYSTEM	04-30-07	Y.B.



- ENCLOSURE:
304 STAINLESS STEEL
24" x 24" x 8"
- A. ZERO GAS (ARGON), 3/8" OD
- B. AIR-ACTUATED VALVE, 1/4" OD
- C. WASTE, 3/8" OD
- D. WASTE, 3/8" OD
- E. AIR-ACTUATED VALVE, 1/4" OD
- F. PROCESS IN, 3/8" OD

ENCLOSURE:
304 STAINLESS STEEL
20" x 16" x 8"

SOLENOID VALVE

PURGE

220VAC

FAULT RELAY RF(+)
C(-)

4-20mA OUTPUT VANADIUM, 5-10 PPM A1(+)
A1(-)

PURGE

AIR IN

FIBER OPTIC CABLES
1.8 METERS

A

THIRD ANGLE PROJECTION REMOVE ALL BURRS AND BREAK SHARP EDGES INDIVIDUALLY PACKAGE AND LABEL SMALL PARTS WITH THE DRAWING NUMBER	UNLESS OTHERWISE SPECIFIED DIMENSIONS ARE IN INCHES TOLERANCES ARE: DECIMAL ANGLES 63 ✓ .XX±.015 ±.5 .XXX±.01 .XXX±.005 BREAK ALL SHARP EDGES DO NOT SCALE DRAWING MATERIAL	COMPANY CONFIDENTIAL THE DOCUMENT AND THE DATA DISCLOSED HEREIN OR HEREWITH IS NOT TO BE REPRODUCED, USED, OR DISCLOSED IN WHOLE OR IN PART TO ANYONE WITHOUT THE WRITTEN PERMISSION OF APPLIED ANALYTICS, INC.	15 NEW ENGLAND EXECUTIVE PARK BURLINGTON, MA 01803 TEL: 302.444.5987
	APPROVALS DRAWN <i>E.M.</i> 04-30-07 CHECKED <i>Y.B.</i> 04-30-07 APPROVED <i>Y.B.</i> 04-30-07	DATE 04-30-07 04-30-07 04-30-07	TITLE OMA-300 - Va IN TiC14 ANALYZER WITH SAMPLE SYSTEM

4

3

2

1

D

C

B

D

C

B

A