

## Analysing up to 15 Sample Lines

Synspec multi channel selector (MCS) can be used in combination with Synspec GC system to analyse up to 15 different sample lines.

All the different sample lines are connected to the MCS and one sample line is selected by a dedicated switching valve in the MCS. The selected sample line is automatically connected to the sample inlet of the Synspec gas chromatograph system.

A sample pump with a pumping capacity of 5 liters per minute is integrated in the MCS. This capacity is sufficient for analysing 100 m of 1/4" sample line in a dead-end configuration.

## Hardware Configurations

Two different hardware configurations of the MCS are available. The best choice depends on the pump capacity, required refresh rate and sample line configuration. Please contact Synspec to discuss the details.

### • Dead-End

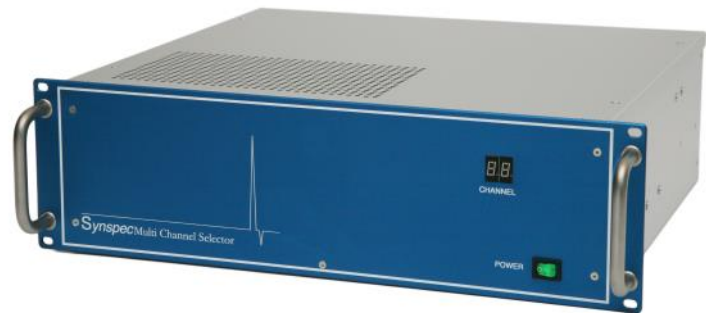
- Only the selected sample line is flushed and connected to the GC

### • Common-outlet

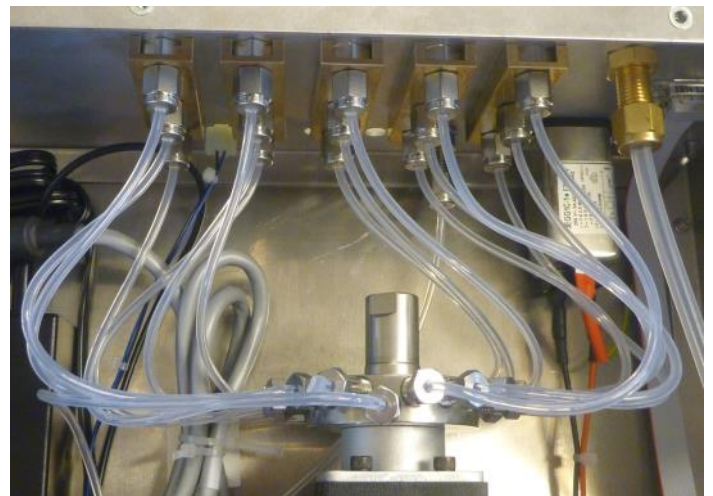
- All sample lines are continuously flushed;
- The selected sample line is connected to the GC;
- All sample lines must have equal length;
- An additional pump with higher capacity might be needed to flush all the sample lines

## Software

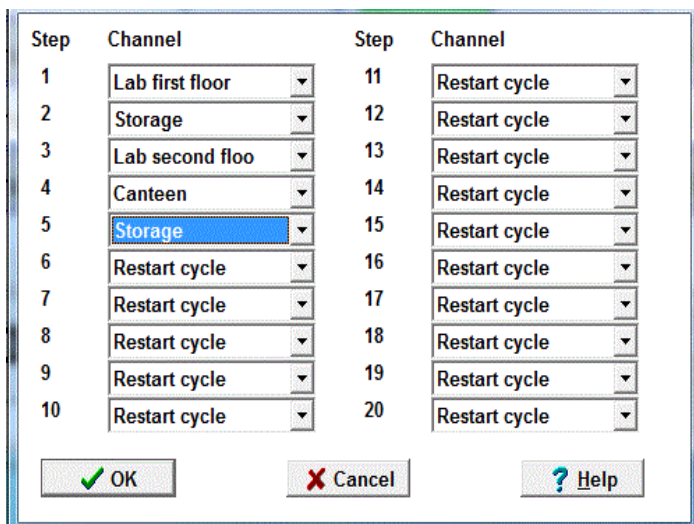
The GC software controls the MCS. This software makes it possible to program the time sequence in which the channels are measured. A sequence of 20 steps (for 15 channels) makes it possible to measure some channels more often than others.



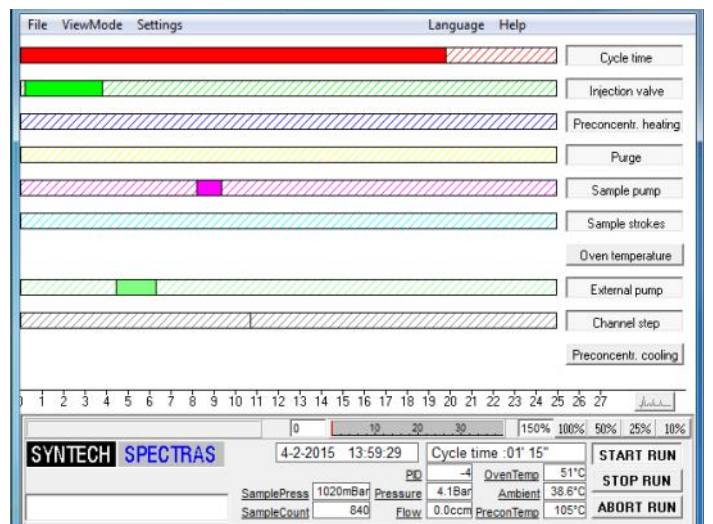
Front view of the multi channel system



Top view of the dedicated integrated switching valve



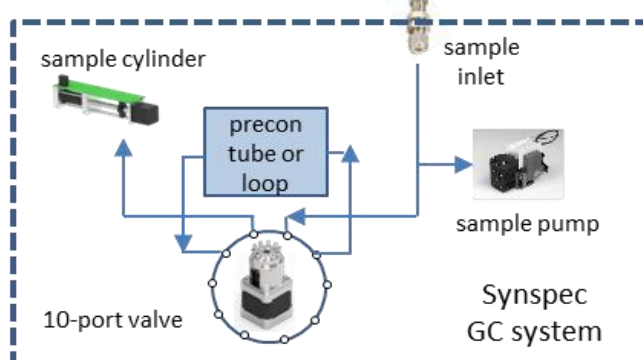
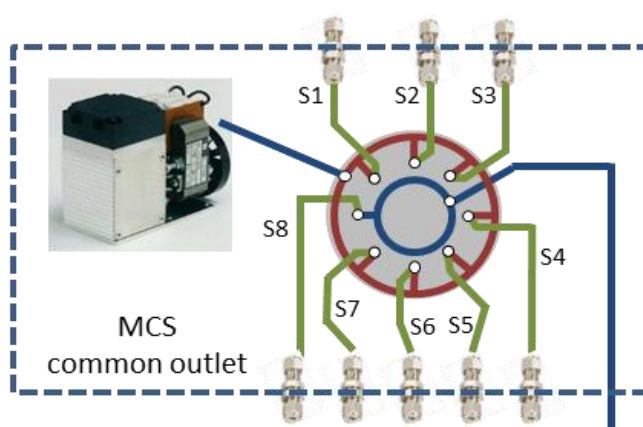
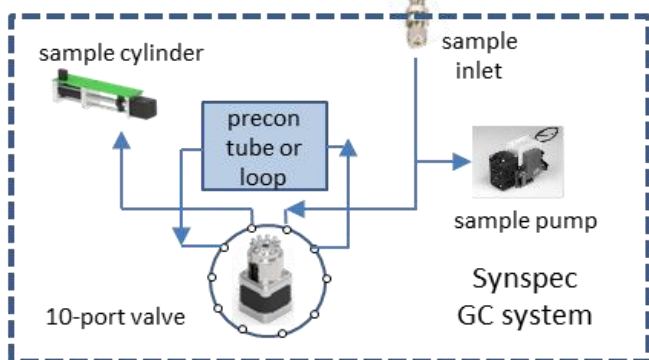
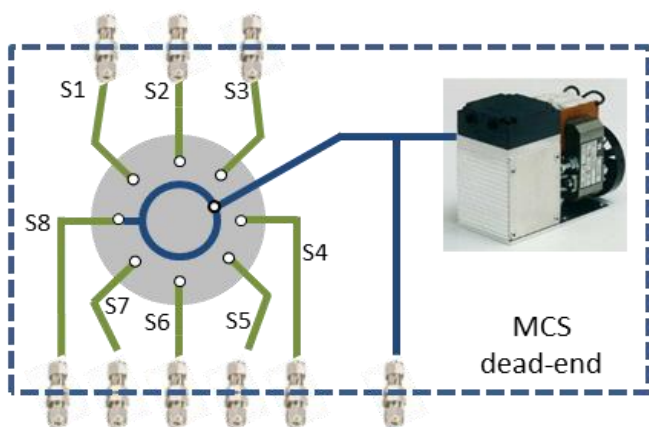
Options for setting the channel sequence



Software setting to control ao the external pump

## MULTI CHANNEL SELECTOR

<b>COMBINATION</b>	Can be used in combination with Synspec Alpha, Synspec Delta, Synspec GC955
<b>NUMBER OF CHANNELS</b>	4 - 15 channels
<b>CONFIGURATION</b>	Option 1: Dead end (only selected sample-line is flushed) Option 2: Common-outlet (all sample-lines are flushed continuously)
<b>INTERNAL TUBING</b>	Standard: teflon tubing Optional: stainless steel tubing
<b>PHYSICAL DATA</b>	
<b>DIMENSIONS</b>	19" rack, (W 48,3 cm ) 3 standard Height Units, (high 13,9 cm ) depth 37,2 cm
<b>POWER DEMAND</b>	230 V AC (115 V AC available)
<b>CONDITIONS</b>	5 °C TO 40 °C, 20 TO 95% RH
<b>GENERAL</b>	
<b>WARRANTY</b>	Standard warranty 2 years



# SYNSPEC

Shaping a cleaner, safer future. With you.

Zernike Campus | De Deimten 1 | 9747 AV Groningen  
| The Netherlands | info@synspec.nl | www.synspec.nl | +31505266454